

# empower MAGAZINE

WINTER  
2020

## HELLO AND SEASON'S GREETINGS!

It goes without saying this year has tested our strength and resolve to make the best of things – if not make things better for the future. I am impressed by the continued drive and determination by WEN's members to offer outstanding programming despite having to work within the confines of virtual environments. The chapter news in this issue reflects this and I hope you enjoy reading about it.

Also in this issue we provide links to some fantastic upcoming events across the WEN footprint, cover the latest update about the National Leadership Cohort, and recap the Diversity, Equity and Inclusion survey results as well as provide information about the exciting new WEN National Book Club.

On a personal note, I want to say that it has been an honor to serve on the National Board these past two years and I am thrilled to pass the torch into the very capable hands of the new Marketing & Communications Director, Sally Hallingstad of the WEN Colorado Chapter. I look forward to her energetic approach to this role and all that she has planned for the future.

I wish you all a happy and healthy holiday season!

Tara Kirkman  
National Marketing & Communications Director

## INSIDE THIS ISSUE

- President's Column
- Chapter News and Events
- 2022 WEN National Conference
- Upcoming Events
- 2021 National Leadership Cohort
- Diversity, Equity and Inclusion Book Club
- Diversity, Equity and Inclusion Survey Results
- WEN Foundation
- WEN By The Numbers



EMPOWERING WOMEN IN ENERGY



PRESIDENT'S COLUMN  
JANA GRAUBERGER

On a recent Saturday morning, I was outside at the local farmer's market, holiday music playing, and I heard the lyric "It's beginning to feel a lot like Christmas," and I thought no it's not. It's not feeling at all like Christmas. It's 80 degrees, all of my annual December outings – work parties, lunches with friends, even school holiday programs – are cancelled in 2020. I won't be getting together with any extended family this year due to COVID-19 risks.

So, what's left? Where's the silver lining? How will I best make use of my time in order to enter 2021 refreshed, centered, and strong? My choice is to focus on peace in this last month of the year. I want to identify and make peace with the changes in me brought on by this year like no other. Never before has the phrase "You do you" had such meaning to me. Wait a minute, you mean I can dress, think, talk, show up or not show up, act, do or not do whatever I want and, by and large, everything is o.k.? Maybe everyone else already knew it, and I am late to the party. But, for me, a silver lining of 2021 is an enhanced awareness that I choose in each moment where I want to put my focus and effort, and moving forward, I give myself permission to focus on the things that make me happy and that I find interesting and fulfilling.

WEN is one those things, for sure. The relationships that I have developed over 15 years and all the great work this organization is doing to benefit women is a bright spot; a nourishing experience for me. In 2021, expect more great stuff from WEN. Under the leadership of President Tara Meek (WEN Greater Pittsburgh) and President-Elect Kara Byrne (WEN Houston), I leave WEN National in great hands, and I know that WEN will grow in size, benefit from expanded diversity, equity, and inclusion efforts, and offer increased opportunities for our members to interact across chapters to gain the greatest benefits possible from WEN membership.

To each and every one of you, I wish you peace in this holiday season, and I hope you find your silver lining.

**Jana Graubeger**

Liskow & Lewis

WEN National President

# CHAPTER NEWS AND EVENTS

## OHIO

During a Virtual Lunch and Learn on September 23, the WEN Ohio Chapter heard from Eric Sass, the H2Ohio Program Manager for the Ohio Department of Natural Resources. The goal of the Program is to remove nutrients that cause harmful bacteria in Lake Erie. He gave an interesting overview of the program that ODNR has implemented to create and enhance wetlands designed to remove nutrients particularly in the northwestern portion of Ohio.

On October 10, six members and three guests were hosted by ASC Group at the WEN Ohio Chapter in-person field trip to an active archaeological excavation site of a Native American Prehistoric Village dating from 1050 to 1275 A.D. The group learned about the requirements, timeframe, and costs of this type of in-depth archeological survey that can be required as part of the permitting process including pipeline projects. The group watched the 20 archaeologists (mostly women) conduct the precise, yet tedious task of uncovering the buried artifacts using small metal trowels, dust pans and whisk brooms. The group saw a sampling of recently excavated artifacts totaling 9,000+ such as shell tempered pottery, part of stone pestle, a bear head effigy, small copper sheeting, polished animal teeth, as well as parts of implements including arrowheads, points and drills that were made from animal bones or rocks. Some of the group tested their skills at sifting excavated soil through screens in order to isolate the artifacts. It was amazing to learn what observation and identification skills an archaeologist needs to find the artifacts left on the screens. This was a great educational opportunity for the Ohio Chapter!



## UTAH

### ***WEN Utah Launches a Mentoring Program!***

WEN Utah is scheduled to kick-off its Mentoring Program in January 2021. Mentoring provides both mentors and mentees personal growth and an increased sense of confidence and fulfillment. Utah is excited to offer this program to its membership! Members should watch out for mentor/mentee applications in December 2020.

### ***WEN Utah Successfully Hosts Virtual Membership Drive!***

On October 29<sup>th</sup>, WEN Utah held its Annual Membership Drive with guest

speaker, Sharon Fain, Rocky Mountain Power's Vice President of Wyoming. The event was held virtually this year, so the Membership Committee emailed a GrubHub e-gift card to all who registered, so that they could nosh during the event, just as they did in-person at last year's Membership Drive. The event was informative and great fun, with 28 potential new members joining the Zoom meeting. In addition, WEN raised over \$300 for the Utah Food Bank, and new member Jeni Isbell was the lucky winner of our \$50 Amazon gift card virtual door prize drawing. Congratulations and thanks to all who participated!

### ***Member Spotlight!***

One our members, Suzanne Eskenazi, just published a book, *With Grit and Determination, A Century of Change for Women in Great Basin and American Archaeology!* Congrats Suzanne! [Check it out here](#)

## SOUTH LOUISIANA

The South Louisiana Chapter of the Women’s Energy Network partnered with the WEN Foundation to establish the Hurricane Laura Disaster Relief Fund. All donations were graciously matched by the Foundation and were donated to the American Red Cross Hurricane Laura Fund, Junior League of Lafayette Diaper Bank, and the Second Harvest Food Bank. On November 16, 2020, WEN SOLA President, Skylar Rudin, and Vice Chair for the Foundation of WEN, Nene Gianfala, had the honor of presenting a check to the American Red Cross in contribution to its Hurricane Laura Relief Fund. The chapter is thankful for the opportunity to partner with the Foundation to aid those in the South Louisiana community affected by Hurricane Laura.



WENSLA awarded scholarships to two students pursuing a career in the energy industry. The two 2020 scholarship recipients are Damilola Ojedeji and Katya Comejo.

Damilola is a second-year graduate student at Louisiana State University studying petroleum engineering. He is from Nigeria and earned his undergraduate degree from the University of Lagos. He serves as a mentor in LSU’s College of Engineering’s mentoring program and is a member of the Society of Petroleum Engineers. Damilola plans on pursuing a PhD after completion of his graduate degree.

Katya is a fourth-year undergraduate student at Southeastern Louisiana University studying electrical engineering. She is from Mexico and was awarded a full scholarship to Southeastern through their tennis program. She serves as captain of the University’s tennis team and as a tutor for other students in the engineering department. Katya plans on focusing her career on sustainable energy.

## GREATER ALBANY

WEN Greater Albany held its Annual Meeting virtually on Tuesday, November 10th. In addition to reviewing the annual budget and recapping the year’s events, newly elected 2021 board members were introduced. President-Elect Ekin Senlet will take over as President of the chapter, Anne Tarpinian was elected as the new President-Elect, Angela Sicker takes over as the new Treasurer, and Alita Giuda will be the new Educational Program Director. They would like to congratulate all the new board members and thank all of the outgoing members for their hard work and dedication the last few years. Outgoing members include Past-President Michelle

Hook, President Alexandra Moore (who will remain as Past-President), Treasurer Laura Darling, and Educational Program Director Emma Maceko.

Also as part of the event, CEO of FirstLight Power Alicia Barton spoke to members about the rewards and difficulties for women working to

advance their careers in energy. Alicia is the former CEO of the New York State Energy Research and Development Authority (NYSERDA) and spoke about the challenges associated with women working in what has historically been a male-dominated field.



**BOSTON**

WEN Boston continues to offer its members a wide variety of virtual programs ranging from expert series to professional development.

On September 19<sup>th</sup>, WEN Boston hosted Penni McLean-Conner, Senior VP and Chief Customer Officer at Eversource Energy, who presented “Shaping New England Clean Energy Future.”

Penni spoke about Eversource, the largest energy company in New England with 8,300 employees in 3 states servicing 4 million customers.

Eversource has invested in energy-efficient programs and services, including efficient lighting, online tools, and rebates, which have resulted in over \$175M in savings for its customers.

Eversource has committed to be carbon neutral by 2030. Efforts to meet this goal include electrification of fleet including bucket trucks, reducing operational emissions, and seeking innovative solutions to offset remaining emissions.

The session ended with a Q&A where Penni answered questions from the attendees.

In September, the chapter also heard from their Board in their third “Lunch with the Board” of 2020. The board members on the panel spoke about their career journey, their role on the Board, and how WEN has helped build their network and enhance their career path. The panel included:

- Mary Stefanidakis, Constellation: Director of Sponsorship
- Sally Griffith-Onnen, Enel: Director of Membership
- Lindsey Sands, Vicinity: Legal Director
- Moderated by: Noël Theodosiou, Principal & CEO luminous / WEN Boston Member

In October, the chapter hosted its 2020 Annual Meeting. They reviewed their year, how they pivoted during unprecedented times, and toasted to their success this year and many more next year.

Their 2020 Expert Series speakers have become a part of the MIT Energy Initiative podcast! They have begun to publish content from the Expert Series on the MIT Energy Initiative Platform.

Check out chapter President Libby Wayman speaking with:

- [Danielle Merfeld](#), CTO GE Renewable
- [Paula Gold Williams](#), CEO and President of CPS energy
- [Mariko Meyers](#), Vice President of Marketing, Enel X



**WEN 2022**  
**NATIONAL CONFERENCE**  
**APRIL 3-5**

REGISTRATION IS OPEN!

## PERMIAN BASIN

While the Permian Basin chapter thought the Coronavirus would be wrapped up by summer, unfortunately it stuck around. They continued hosting their virtual events, leading them to their highly anticipated luncheon with Mayor Patrick Payton!



During this event, they discussed “The Five Core Needs” and the cultural shift we are seeing in younger professionals. Women intuitively build people rather than industry, which helps sculpt leaders and nurtures the idea that we are not defined by our careers.

Although the year has been shaped a bit differently, their members are what make the Permian Chapter what it is!

Here is their list of their 2021 Board of Directors and Elected Chairs:

- President**, Heather Tash
- President-Elect**, Amy Penland
- Secretary**, Kristin Schmidt
- Treasurer**, Sunny Wineinger
- Director of Membership**, Rohini Restelle
- Director of Community Initiatives**, Lacey Rogers
- Director of Marketing**, Kelsey McCarron
- Director of Sponsorship**, Rita Bures
- Director of Programs**, Amanda Turner
- Immediate Past President**, Jenny Alexander
- National Liaison Chair**, Lori Wesley
- Mentoring Chair**, Taylor Reeves
- Young Women Energized Chair**, Hillary Hunter
- Career Development Chair**, Katie McBryde
- Signature Event Chair**, Kyndall Leone
- Signature Event Co-Chair**, Heather Box
- Fundraising Chair**, Belinda Vejar

## GREATER PITTSBURGH

### Outdoor Fall Fun

WEN Greater Pittsburgh took advantage of the beautiful fall weather this year to host some fun and socially distanced outdoor networking events. Beginning in September, members were invited to participate in a Golf 101 Series that covered the basics of the game of golf. The program was attended by golfers of all levels, but specifically geared towards those with no experience who have always wanted to participate in an industry golf event. The four-week program covered not only the rules and etiquette of golf, but also provided instructional lessons on putting, chipping and driving. At the end of the program, the golfers put their hard work to play and showcased their new skills by participating in a 9-hole scramble.

In October, WEN Greater Pittsburgh also returned to Nemaocolin Woodlands for its annual clay shoot. Although the weather was a little less cooperative, the event was still a huge success and gave members another opportunity to network in-person while practicing their sporting clay skills.

### Gala Fundraising Update!

WEN Greater Pittsburgh is proud to announce that despite a challenging year, the Boots & Ballgowns Gala Committee continued raising money after the annual gala and surpassed its original fundraising goal by bringing in over \$10,000 to support Variety – The Children’s Charity. Variety is a local non-profit that provides adaptive equipment to children with disabilities. A very special thank you to all our generous gala sponsors and to all who donated for helping us achieve our goal and supporting such a wonderful cause!



## CHICAGO

In October, WEN Chicago hosted a panel discussion entitled *Adapting Your Career*, which focused on how employees need to pivot in a virtual work environment to continue to develop professionally. With most organizations not planning to have a full staff back in an office building until well after the new year, and many now re-thinking the way they operate going forward, this discussion centered around how organizations can engage better with employees, as well as how employees can focus on their Performance, Image and Exposure (the P.I.E. Model by Harvey Coleman) while working virtually and not having those in-person opportunities. The discussion was facilitated by Jenny Riley

from Elevate Energy and the panelists represented various parts of the energy industry with Sandra Arredondo from HBK Engineering, Shannon Pierce from Southern Company Gas and Susan Stelter from West Monroe Partners.

WEN Chicago and WEN Atlanta have partnered together for a three-part series entitled *Powering the Future*. This series is focused on the digital transformation many are experiencing in the power industry. On November 17th, the chapter hosted part one of this series which focused on the journey of the digital grid and provided members with a glimpse into the endless possibilities for the utility of the future. Their esteemed panelists from leading companies in the electric industry included Kelly Lyman from Exelon

Corp, Carla Friehe from ComEd, Kristie Barton from Alabama Power and Blair Sandford from Southern Company and was moderated by Karen Felton from EY. This energetic discussion centered around the convergence of power and information, which is providing higher grid reliability, improved storm response and predictability, and unleashing numerous opportunities along the value chain and industry business models. The next two parts of this virtual series will be scheduled for early 2021 and will focus on the opportunities and threats of the digital grid, as well as the transformation of the customer experience!

## SOUTH TEXAS

In an effort to help the community during this unusual time, board members of WEN South Texas approved two extraordinary initiatives.

First they ordered and delivered 400 masks for students and teachers at the M.L. King Academy in the San Antonio Independent School District. WEN-ST donated the masks in early September to try and help keep them healthy as they work to balance in-person instruction with new COVID safety guidelines. To make the must-wear personal items a little more fun for kids, they added a sun that's so bright it had to wear shades, along with a lightning bolt on the other side of the logo.

At the chapter's final meeting of the year, board members unanimously voted to reallocate unused funds from the 2020 budget and donate them to organizations that could use a helping hand. Members nominated five programs, and each will receive \$1,000 contributions. For the New Braunfels Food Bank, that translates to 7,000 meals for families. The other organizations include: The Chosen Care, San Antonio Hope Center, The San Antonio Food Bank, and CPS Energy's REAP program.



Masks handed out at M.L. King Academy



(left to right): Monica Borrego, Executive Director, New Braunfels Food Bank; Seymour Battle, Vice-Chair, New Braunfels Food Bank Advisory Board; Michele Perry, WEN-ST, Director of Program Development

**WASHINGTON, DC**

WEN DC has continued to hold interesting programming for its members on a virtual basis this year due to ongoing COVID restrictions (available to other WEN chapters members and, as always, any other interested guest attendees).

On September 24, the chapter held a lunch and learn discussion on the EU Energy Transition Strategy and Expectation of COP26. They were joined by Carole Mathieu, Head of EU Policies, Center for Energy & Climate, at the French Institute for International Relations (Ifri). Carole was interviewed by the WEN DC Co-Presidents, Emily Duncan and Mara Zimmerman.

The discussion was held with the November election looming, and DC energy experts looking to international climate rules to understand what a possible change of Administration might mean for US energy policy. The discussion focused on implications

of the European Green Deal and its assortment of related programs, and how the various strategies to meet the ambitions of the Paris Agreement may play out at the next meeting of the next UN Climate Change Conference (UNFCCC COP 26) scheduled for November 2021 in Glasgow, UK.

On November 18, the chapter held another lunch and learn discussion, and this focused on the important topic of Allyship- Diversity, Equity and Inclusion in the energy sector. The discussion centered on women of color’s experiences in the energy industry, what can be done to create a more inclusive environment, and whether there are policies either internally or externally we can support to move the ball forward. The panel was moderated by Paula Glover, President and CEO, American Association of Blacks in Energy, joined by speakers Tatiana Roc, Vice President Gas Business Enablement, GBU Transformation

Office, National Grid; and, Margita Thompson, Sr. Vice President, Public Affairs and Community Outreach, California Resource Corp.

The final event of the year was the annual philanthropy event on December 1. This year, WEN DC is supporting the D.C. Central Kitchen (DCCK), an iconic nonprofit and social enterprise that combats hunger and poverty through job training and job creation. The organization provides hands-on culinary job training for individuals facing high barriers to employment while creating living wage jobs and bringing nutritious, dignified food where it is most needed. DCCK’s social ventures include serving scratch-cooked farm-to-school meals in DC schools, delivering fresh, affordable produce to corner stores in neighborhoods without supermarkets, and operating a fast-casual cafe.

**NORTH TEXAS**

WEN North Texas continues to provide its members with virtual opportunities to network, support women-focused community groups, and enrich their industry knowledge.

This quarter, they took their annual in-person leadership event virtual, exploring the concept “Staying Competitive in the New Decade.” The event took place over two days and featured several influential and charismatic speakers on topics ranging from being your authentic self in the workplace, supporting women teams, and updates on one of the state’s most prolific basins, the Permian.

The chapter hosted another fundraiser for the Genesis Women’s Shelter, a Dallas-based nonprofit that provides shelter and other forms of support to women who have experienced domestic violence. They greatly appreciate our members stepping up to help other women in need.

As they look forward, WEN North Texas named its 2021 Board of Directors, a strong group of women leaders who are ready to hit the ground running in the new year. They are thankful for the service of their 2020 Board, including Chapter President Sucheta Gokhale for her leadership in an extraordinary, unprecedented year!

**Women's Energy Network NORTH TEXAS**

**STAYING COMPETITIVE IN THE NEW DECADE**

**10TH ANNUAL LEADERSHIP CONFERENCE SERIES**  
October 8<sup>th</sup> and 22<sup>nd</sup>

 Anna Catalano Board of Director HollyFrontier Corp.	 Carla Howard SVP & General Tax Counsel Vistra Energy Corp.	 Wendy Salinas Co-Managing Partner Vinson & Elkins
 Tracee Bentley CEO, Permian Strategic Partnership	 Susan Gratton, VP, Permian Affairs Pioneer Natural Resources	 Margaret Cooper Corporate Affairs Chevron North America Exploration & Production

**Introducing the 2021 Board**

**Women's Energy Network NORTH TEXAS**

 Terecia Garcia President	 Jennifer Willis President-Elect	 Din Browning Secretary	 Elizabeth Troches Treasurer	 Sucheta Gokhale Past President & Exec Membership Director
 Terecia Martin Programs Director	 Stephanie Byrd Programs Director	 Jennifer Evans Special Events Director	 Gauri Gajjarwar Special Events Director	 Lauren Baker Communications Director
 Julia Foster Communications Director	 Megan Wright Public Relations Director	 Kelli Adams Memberships Director	 Debbie Forster Memberships Director	 Kelli Beach Executive Memberships Director
 Elizabeth Hillier Sponsorship Director	 Natalia Corry Sponsorship Director	 Shamell Robinson Leadership Conference Director	 April Faugh Leadership Conference Director	

[www.womenenergy.net/northtx](http://www.womenenergy.net/northtx)



## UPCOMING EVENTS

New events are added frequently. Check [womensenergynetwork.org](http://womensenergynetwork.org) for additional information and virtual listings. Dates and presenters may change, so please visit the events calendar for the latest details. This list includes events schedule prior to November 23, 2020.

### December 8

North Texas

[Holiday Support for Genesis Women Shelter](#)

### December 8

Greater Atlanta

[Annual Business Meeting & Happy Hour](#)

### December 8

Boston

[2020 Expert Series with Marcy Reed](#)

### December 9

Houston

[Taking Control of Your Evolution](#)

### December 9

Chicago

[Virtual Holiday Mixer – Paint & Sip](#)

### December 9

Greater Pittsburgh

[Virtual Holiday Wreath Making Workshop](#)

### December 10

Ohio

[Purse Project Community Initiative](#)

### December 10

Houston

[Holiday Wine Tasting](#)

### December 16

West Virginia

[Life Coaching Series - December](#)

### December 18

Ohio

[Holiday Happy Hour](#)

### January 20

West Virginia

[Life Coaching Series – January](#)

# 2021 NATIONAL LEADERSHIP COHORT

WOMEN'S ENERGY NETWORK

## 2021 NATIONAL LEADERSHIP COHORT

in partnership with **YIELDED**  
CONSULTING SERVICES

After much success in 2020, the National Leadership Cohort series will continue in 2021. The Cohort is a yearlong transformational leadership journey with colleagues from across the larger WEN network lead by consultant Brandon Towle to grow individually and as a leader within your specific context.

**Where:** Virtually

**When:** Begins 2021

**WEN Negotiated Rates:**

**Teaser Rate (or two-time payment):**

- o \$400 (1st Quarter Participant)
- o \$1,200 (Optional remainder of program due 2nd Quarter)

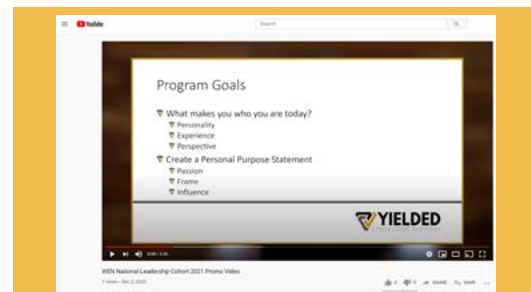
**Entire Year (one time payment)**

\$1440 (10% discount)

**Optional 1:1 Coaching**

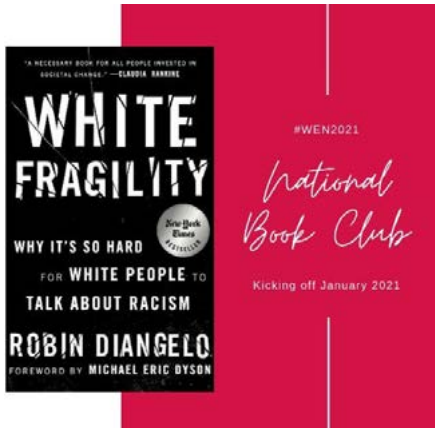
\$800 (10 sessions)

**Corporate Discounts and Individual Grant Opportunities available**



**View the Video here!**

# DIVERSITY, EQUITY AND INCLUSION



**About the Author:**

Dr. Robin DiAngelo is an academic, lecturer, and author and has been a consultant and trainer on issues of racial and social justice for more than twenty years. She formerly served as a tenured professor of multicultural education at Westfield State University. In 2011, DiAngelo coined the term White Fragility in an academic article which influenced the international dialogue on race. Her book, *White Fragility: Why It's So Hard For White People To Talk About Racism* was released in June of 2018 and debuted on the *New York Times* Bestseller List where it remained for 85 weeks.

## BOOK CLUB

Join WEN National's resolution, continuing our education and discussion on Diversity, Equity and Inclusion in 2021. Members can participate in a book discussion on *White Fragility: Why It Is So Hard For White People to Talk About Race* by Robin DiAngelo.

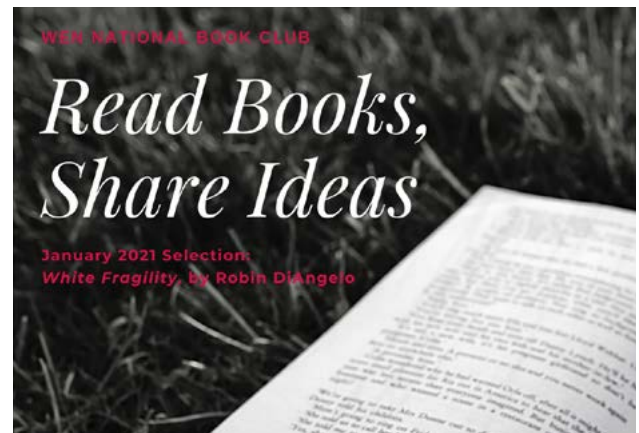
Many of us have encountered roadblocks to discussing racial justice within majority white offices and communities. In her book, DiAngelo provides language to understand the various reactions that white people have when race is discussed.

include the outward display of emotions such as anger, fear, and guilt, and behaviors such as argumentation, silence, and leaving the stress-inducing situation. These behaviors, in turn, function to reinstate white racial equilibrium" says DiAngelo.

In this in-depth exploration, DiAngelo examines how white fragility develops, how it protects racial inequality, and what we can do to engage more constructively. All members are encouraged to read the book and participate in four discussions in January and February 2021 to kick start the new year.

"White Fragility is a state in which even a minimum amount of racial stress becomes intolerable, triggering a range of defensive moves. These moves

We ask that you register for free to ensure that we have the bandwidth for the call. It's important now more than ever to stay connected, learn and continue the discussion!



**Jan 7: Session 1**  
Race & Racism, White Supremacy & the Civil Rights Movement (Chapters 1-3)

**Jan 21: Session 2**  
How Does Race Shape Lives (Chapters 4-6)

**Feb 4: Session 3**  
Triggers and Behaviors (Chapters 7-9)

**Feb 18: Session 4**  
Feedback, White Tears & Reconciliation (Chapters 10-12)

“White Fragility is a state in which even a minimum amount of racial stress becomes intolerable, triggering a range of defensive moves.”



**REGISTER NOW!**

## Surveying WEN Members Creates Future Roadmap

By: *Brittany Ramos*



During the month of October we asked WEN members to provide open, honest feedback on the topics of diversity, equity and inclusion. This survey was created as part of the strategy by the WEN Taskforce on Racial Equality in the Workforce and we saw it as a way to truly gain insights on how members were feeling and what they had experienced. And more importantly,

it provided a baseline from where WEN can measure each year to determine needs and to track progress on our goals.

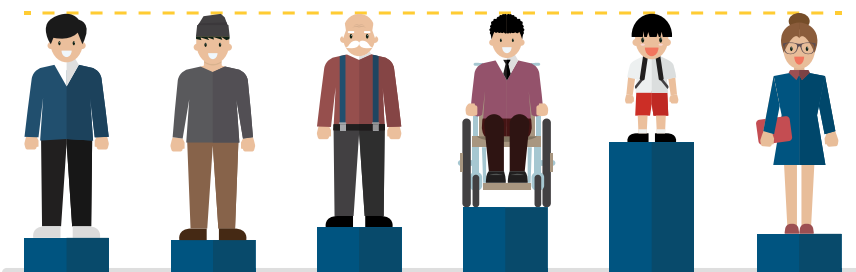
Let's be clear – these are not easy topics to discuss. Even the distinction between the terms “equality” and “equity” carry immense weight. But these are also important topics to consider because diversity of thought makes for a better and more inclusive WEN.

We were thrilled to have nearly 400 members take the time to respond. A sincere thank you to every person who submitted their thoughts and suggestions. The feedback has been reviewed and analyzed and will truly provide a roadmap to the incoming National Director of Diversity, Equity and Inclusion.

One of the biggest takeaways is that while WEN has been doing some work around diversity and inclusion, there is always room for improvement. It is with a respect and appreciation for who we are as an organization now that members shared their stories and insights as to what they hope growth can look like – and that is incredibly inspiring. Members have identified areas of strength from which the organization can lean on while also acknowledging areas for improvement to make WEN a more inclusive organization for every member to feel like they belong.

A full report on the findings will be made available to all of membership shortly – we encourage you in the meantime to browse the resources on [our One WEN for All page](#).

Thanks once again to the survey respondents for creating guideposts for a path forward. The Task Force can still be reached with any other thoughts, ideas or concerns at [dei@womensenergynetwork.org](mailto:dei@womensenergynetwork.org).



## WEN FOUNDATION



The WEN Foundation Board was overwhelmed with member's generosity over the past few months with donations made to the Foundation for the Women's Energy Network Hurricane Laura Disaster Relief Fund. The WEN Foundation received \$2,550 to help WEN members, families, and friends in these hard-hit areas. The WEN Foundation was proud to match the donation dollar for dollar, for a total donation of \$5,100. The donations have been split between the following three organizations: Second Harvest Food Bank, Junior League of Lafayette Diaper Bank and American Red Cross.

- Second Harvest Food Bank – every dollar provides four meals to families in needs. Your donation will provide 425 meals!
- Junior League of Lafayette Diaper Bank – diapers are donated to Junior League of Lafayette and processed into packages of 25, which is the identified national average diaper shortage per child per month. At an average cost of \$0.30/diaper, your donation is providing over 5,600 diapers, touching over 220 children in need in the South Louisiana area.
- American Red Cross – your donations will help provide emergency housing, food, water and basic necessities to the impacted area.

Thank you for continuing to empower the WEN Foundation to fulfill their philanthropic mission to make an impact in our WEN Chapter local communities.



# BY THE NUMBERS



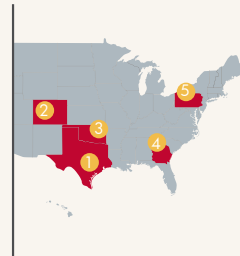
TOTAL  
MEMBERSHIP  
5,781

1,302 NEW MEMBERS  
SINCE JANUARY 1, 2020

20  
CHAPTERS

## LARGEST CHAPTERS

1. Houston
2. Greater Oklahoma
3. Colorado
4. Greater Atlanta
5. Greater Pittsburgh



308 TOTAL CHAPTER EVENTS  
HELD SO FAR IN 2020



1 BIG THANK YOU TO ALL OUR MEMBERS!

Results through December 2020.

WEN NATIONAL  
BOARD OF DIRECTORS



Jana Grauberger  
President  
Liskow & Lewis



Tara Meek  
President Elect  
Williams



Anna Tallent  
Treasurer  
Ernst & Young



Andrea Tettleton  
Secretary  
Seabaugh, Joffrion, Sepulvado, Victory



Mary Frances Edmonds  
Chapter Relations Director  
Williams



Tara Kirkman  
Marketing & Communications Director  
GAI Consultants, Inc



Kristi Obafunwa  
Membership Director  
Kean Miller LLP



Kara Byrne  
Programs Director  
Baker Hughes




Katie Wilson  
Sponsorship Director



Erin Magee  
Past President  
Jackson Kelly PLLC

THANK YOU  
WEN NATIONAL  
SPONSORS





Women's  
Energy  
Network™

---

